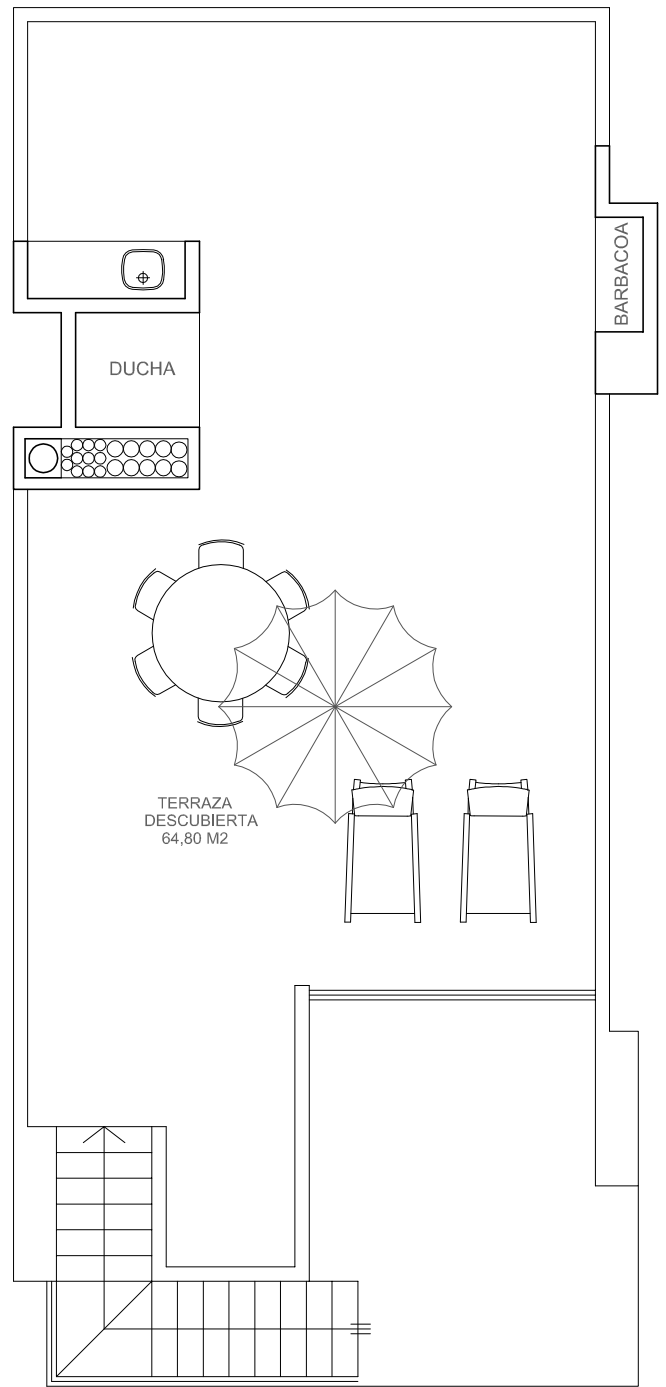
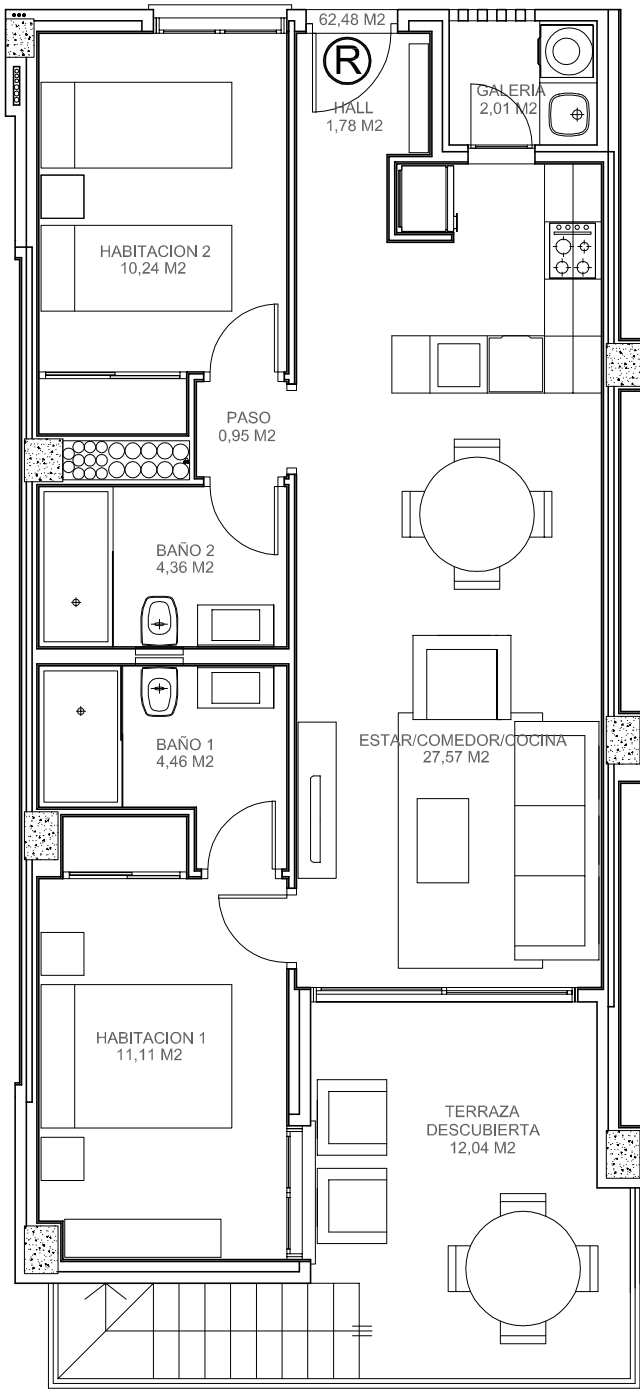


CONSTRUCCIONES VARUDI, S.L. RESIDENTIAL "THE PORT"

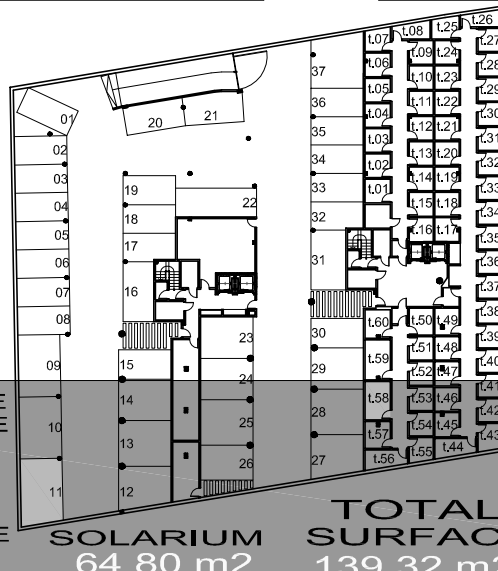


STORAGE t.58
SURFACE 8,78 m²

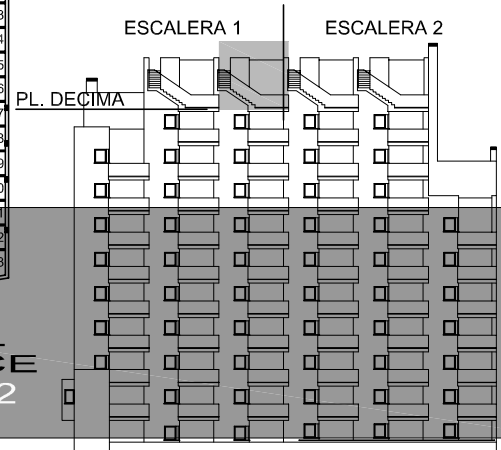
PARKING 11
SURFACE 24,60 m²

APARTMENT TYPE **R** TERRACE SURFACE 12.04 m²

BUILDED SURFACE 78.03 m² USEFUL SURFACE 62.48 m²



SOLARIUM 64.80 m² TOTAL SURFACE 139.32 m²



ENTREGA DICIEMBRE 2024

THESE PLANS HAVE BEEN MADE BY MEANS OF THE BASIC PROJECT AND THEY CAN SUFFER MODIFICATIONS DURING THE BUILT
ESTOS PLANOS HAS SIDO REALIZADOS EN BASE AL PROYECTO BASICO, PUDIENDO SUFRIR MODIFICACIONES DURANTE LA EJECUCION